

Employee commitment

- Deliver the passion to the future with our solution -

CellPathfinder, High Content Analysis Software



■ My responsibility

Software development for CellPathfinder and SS2000.

■ My customers

Those who are screening mainly in pharmaceutical companies or academia, especially doing cancer or regenerative medicine research.

■ Customers' challenge

Correctly evaluate the state of cells without staining samples. Observing infrequently occurring events (e.g. CTCs) without missing them.

■ What Yokogawa offers

High-content analysis system that allows bright field images to be captured without staining CE Bright Field samples.

■ My Commitment

I was determined to create a new technology that goes beyond Yokogawa's then-current technological strength, confocal technology, and realizes bright field view analysis. I wanted to create new values with technology that can evaluate living biology properly with precise analysis without any blind spot.

Giving shape to an idea and creating something that really work is exiting, but more difficult than one might imagine. In the implementation process, things often do not turn out the way we want. At such times, I respond without hesitation and step forward trusting my intuition, not afraid of changes.

To be able to do that I put feelers out, accumulate information and knowledge, and communicate with team members.

Making sure to take a careful process, and deliver surprises that exceed expectations while ensuring quality.

Biotechnology will change the world for the next 20-30 years, bringing disruptive changes in Pharma and F&B industries that directly affect people's health and well-being.

It is essential to create synergies by linking R&D and production. I believe that software is an essential part of this. I want to create a new story towards the future by linking software, technologies and people.

■ Yokogawa Life Business Vision

Yokogawa LIFE Business established its vision and is working diligently to realize it. I feel my work is truly connected to the realization of the Yokogawa Life Business Vision.



We will lead the world in advancing "Bio Industrial Autonomy (BIA)", and contribute to a future embracing global harmony.

Realizing the LIFE Business Vision means changing people's lives and putting smiles on their faces. Working for Yokogawa is in a way contributing to societal good for me. I was just an employee thinking I'm nothing but a code writer, but now I feel like I'm weaving this big story for brighter future and happier life for human being. It makes me proud and want to put more effort.

Yokogawa's Solution

The intuitive, easy-to-use interface guides the user from analyzing thousands of image data in various angles to visualize the result by generating numerous graph types. In addition, the Machine Learning and Deep Learning function increase the target recognition capability dramatically. It is also ideal for the analysis with the complexity and high-degree-of-difficulty such as analyzing the data from 3D culture and live-cell imaging. The CellPathfinder software is a powerful tool for HCA.



CellPathfinder, High Content Analysis Software

CellPathfinder Resolves Difficulties

For screening

CellPathfinder resolves screening bottlenecks.

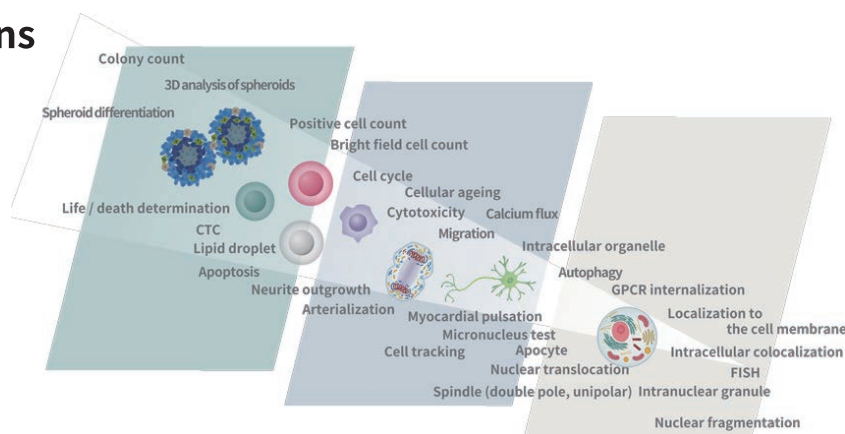
- A specialized interface for inspecting multiple samples makes image comparison easy, improving efficiency.
- Advanced analysis using AI is possible through simple operation, even for beginners.
- Various graph creation functions and simple image and video creation, reducing hassles at the time of reporting.

For cancer research and regenerative medicine screening

CellPathfinder provides leading HCA through proprietary analysis technology.

- Label-free analysis of samples that you do not want to stain is possible using Yokogawa's proprietary image generation technology "CE Bright Field".
- Newly-developed easy-to-use Machine Learning and Deep Learning make previously difficult phenomena detection easy.
- Detection of rare events (CTC, etc.) with high speed and high accuracy.

Applications



Yokogawa Electric Corporation

2-9-32 Nakacho, Musashino-shi, Tokyo 180-8750 Japan

E-mail: LIFE-MK-info@cs.jp.yokogawa.com

URL: <https://www.yokogawa.co.jp/about/yokogawa/company-overview/general-information/life/>

The contents of this document are subject to change without prior notice. All product and company names that are referred to in this document are trademarks or registered trademarks of their respective companies.
All Rights Reserved, Copyright © 2023, by Yokogawa Electric Corporation

[Ed:01/d]